



T-Flux EX Modular Spotlight

T-Flux EX complete modular design spotlight installed via track mount. Designed with interchangeable optics for different beam angles and includes a media holder for lighting accessories i.e. filters, lens and honeycomb louvre. Complete with multiple driver options. Built to conform to the requirements of BS EN 60598-1 and IEC 598. Photometrically tested to LM-79.

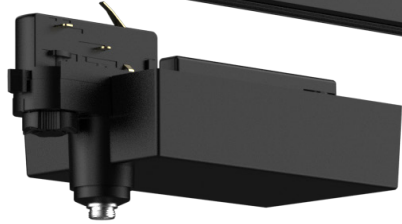


COMPLETE MODULAR DESIGN

The complete modular design makes it easy to change the specification or appearance to match the requirements. Also saves time and cost on maintenance. Various lumen output options depends on spotlight size. 2700K, 3000K, 4000K, Warm Dim, colour rendering Ra>90 and 2 step Macadam are all available. Also provides wide range of control options such as Non-Dim, 0-10V, Dali, CASAMBI, TRIAC. (For 0-10V uses driver box, specific driver available by order)

Driver

Universal control gear options



Optic: Cree LED
Reflector: Xicato LED
Narrow to flood beam are all available



LED Engine

Cree or Xicato
Available in 85mm and 105mm



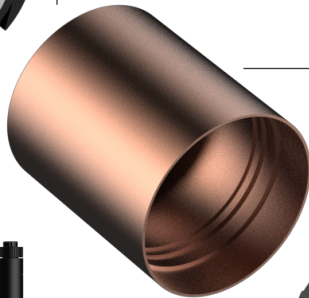
105mm up to 30W



85mm up to 20W

Body

White / Black / Bronze
(Other colours are available by order)

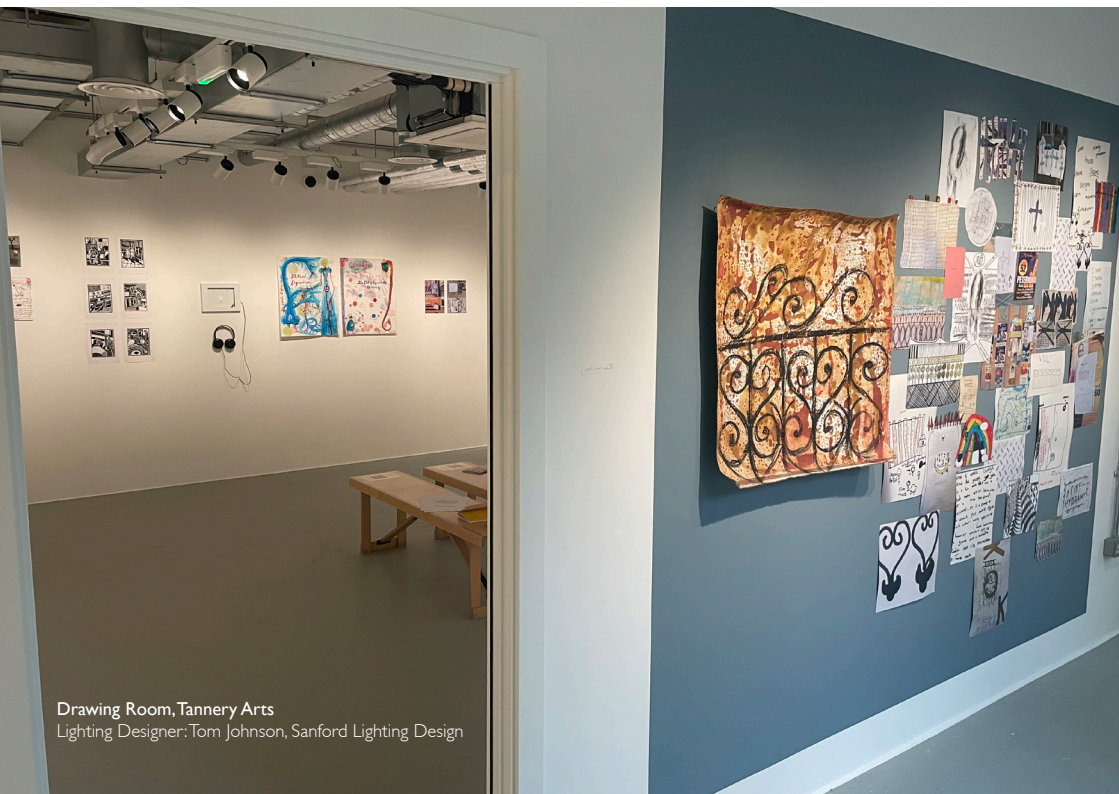


Lower Reflector

Specular silver /
Satin silver /
White / Black / Bronze
(Other colours are available by order)

CRI 98 COLOUR RENDERING GALLERY VERSION

For high end colour rendering such as galleries and luxury stores the T-Flux range can be supplied with Cree CRI98. The T-Flux EX105 also has the option of using a Xicato light engine. With multiple options lighting designers can easily find the best solution for their projects.



Drawing Room, Tannery Arts
Lighting Designer: Tom Johnson, Sanford Lighting Design

LUMEN PACKAGE

T-Flux EX85 $\varnothing 85\text{mm}$

T-Flux EX105 $\varnothing 105\text{mm}$



T-Flux EX85 Standard with Cree CRI 90 Light Engine For 19° / 25° / 36° / 50° Beam

CCT	Lumen Source	Delivered Lumens*	CRI	Forward Voltage	Pd (W)	Current
2700K	1440 lm	1152 lm	90	33V	10 W	300 mA
	1880 lm	1504 lm	90	34V	14 W	400 mA
	2290 lm	1832 lm	90	34V	17 W	500 mA
3000K	1500 lm	1200 lm	90	33V	10 W	300 mA
	1950 lm	1560 lm	90	34V	14 W	400 mA
	2380 lm	1904 lm	90	34V	17 W	500 mA
4000K	1530 lm	1224 lm	90	33V	10 W	300 mA
	1990 lm	1592 lm	90	34V	14 W	400 mA
	2420 lm	1936 lm	90	34V	17 W	500 mA

*Nominal delivered lumens.

T-Flux EX105 Standard with Cree CRI 90 Light Engine For 13° / 19° / 25° / 36° / 50° Beam

CCT	Lumen Source	CRI	Forward Voltage	Pd (W)	Current
2700K	2290 lm	90	34V	17W	500 mA
	2680 lm	90	35V	21 W	600 mA
	3040 lm	90	35V	25 W	700 mA
3000K	2380 lm	90	34V	17 W	500 mA
	2780 lm	90	35 V	21 W	600 mA
	3160 lm	90	35 V	25 W	700 mA
4000K	2420 lm	90	34V	17 W	500 mA
	2830 lm	90	35 V	21 W	600 mA
	3210 lm	90	35V	25 W	700 mA

T-FLUX EX85 & T-FLUX EX105

GALLERY VERSION LUMEN PACKAGE

T-Flux EX85 Gallery with Cree CRI 98 Light Engine For 19° / 25° / 36° / 50° Beam

CCT	Lumen Source	CRI	Forward Voltage	Pd (W)	Current
2700K	1380 lm	98	33V	10 W	300 mA
	1790 lm	98	34V	14 W	400 mA
	2190 lm	98	34V	17 W	500 mA
3000K	1450 lm	98	33V	10 W	300 mA
	1880 lm	98	34V	14 W	400 mA
	2300 lm	98	34V	17 W	500 mA
4000K	1470 lm	98	33V	10 W	300 mA
	1910 lm	98	34V	14 W	400 mA
	2340 lm	98	34V	17 W	500 mA

T-Flux EX105 Gallery with Cree CRI 98 Light Engine For 13° / 19° / 25° / 36° / 50° Beam

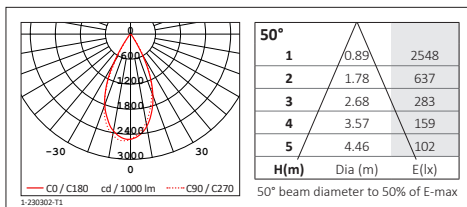
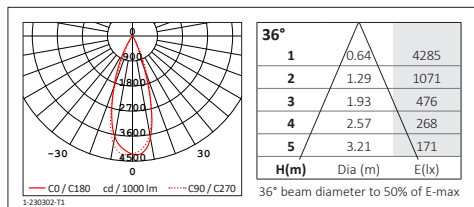
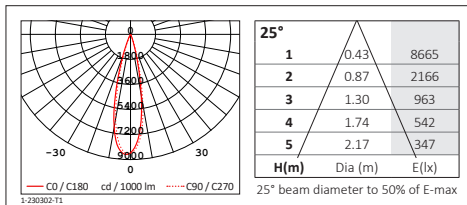
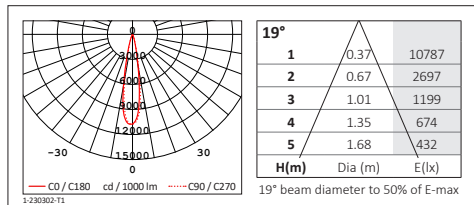
CCT	Lumen Source	CRI	Forward Voltage	Pd (W)	Current
2700K	2190 lm	98	34V	17 W	500 mA
	2550 lm	98	35V	21 W	600 mA
	2900 lm	98	35V	25 W	700 mA
3000K	2300 lm	98	34V	17 W	500 mA
	2680 lm	98	35V	21 W	600 mA
	3050 lm	98	35V	25 W	700 mA
4000K	2340 lm	98	34V	17 W	500 mA
	2730 lm	98	35V	21 W	600 mA
	3110 lm	98	35V	25 W	700 mA

T-Flux EX105 Gallery with Xicato Light Engine For 24° / 42° / 67° Beam

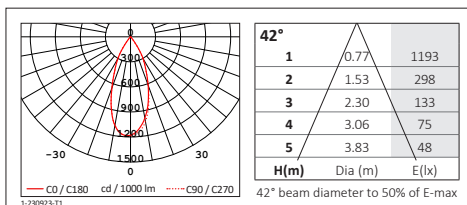
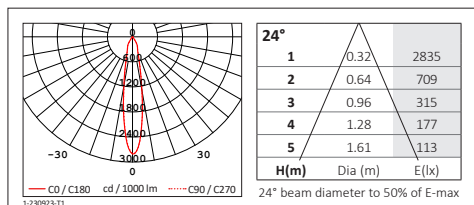
CCT	Lumen Source	Delivered Lumens*	CRI	Forward Voltage	Pd (W)	Current
2700K	1580 lm	1106 lm	>95	28V	14 W	500 mA
3000K	2140 lm	1498 lm	>95	28V	20 W	700 mA
4000K	3000 lm	2100 lm	>95	28V	30 W	1050 mA

*Nominal delivered lumens.

T-FLUX EX85 STANDARD PHOTOMETRIC DATA



T-FLUX EX105 GALLERY PHOTOMETRIC DATA



PRODUCT CODING EXAMPLE: F3A4322J35R620

Size	Distribution	Reflector Colour	Initial Lumen	CRI	Colour Temp	Driver Protocol	Shape	Case Colour	IP	Accessories
F3A Ø85mm	2 11°-20°	1 Specular	18 1870 lm	B Xicato	2 2700K	0 Non-Dim	R Round	3 Black	2 IP20	0 None
F4A Ø105mm	3 21°-30°	Silver	22 2222 lm	Ra95	3 3000K	1 1-10V		4 White		1 Honeycomb
	4 31°-40°	2 Satin Silver	23 2390 lm	J Cree	5 4000K	2 0-10V		6 Bronze		2 Elliptical Film
	5 41°-50°	3 Black		Ra90		5 DALI				3 Frosted Lens
	6 51°-60°	4 White		K Cree		7 TRIAC				
		6 Bronze		Ra98		8 Casambi				
F3A	4	3	22	J	3	5	R	6	2	0

DAL LONDON STUDIO

UNDERWOOD WORKS, 6-14 UNDERWOOD STREET, LONDON, N1 7JQ

+44 (0)207 4903998

SALES@DAL-UK.COM

WWW.DAL-UK.COM



© 2023. Designed Architectural Lighting. All rights reserved, all designs and photos are protected by copyright.