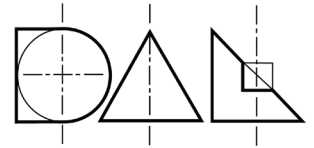


# Compact 89 (LED MODULE) SUMMARY



Compact 89 (LED Module) recessed downlighter with standard white ceiling trim and a choice of reflector finish and beam distribution. The high-quality precision optics gives visual comfort. It can be positioned downwards as a fixed downlighter, adjusted for a directional downlighter, and adjusted (wide beam) to perform as a wall wash. The accessory holder allows provision for elliptical film / lens and honeycomb louvre for glare control (optional). A flexible lighting solution for all situations.

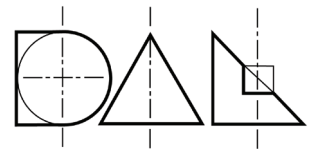
Compact 89 incorporates the latest, high efficiency LED technology, high output, high colour rendering 90 CRI and 2-step colour consistency through life is ensured by state-of-the-art components. Heat sinks are made of passive cooling aluminum. It is easy to install and mains dimmable drivers are mounted remotely.



Light Source	Beam Angle	Lumen Source	LED W	CCT	CRI	Macadam	IP Rating
Led Module	21°, 33°, 44°, 54°	700 lm	5W	2700K, 3000K, 4000K	>90	2 step	IP20 IP44
		900 lm	6W				
		1100 lm	8W				
		1300 lm	10W				

## P3F3407J250S420 (PROUDCT CODING EXAMPLE)

Series	Type	Distribution	Reflector Colour	Initial Lumens	LED	Colour Temp	Driver Protocol	Emergency Protocol	Shape	Trim Colour	IP	Accessories
COMPACT89	F FIXED	3 21-30°	1 SPECULAR SILVER	07 700 lm	J CREE	2 2700K	0 NON DIM	0 NONE	R ROUND	L Trimless	2 IP20	0 NONE
	A ADJUSTABLE	4 31-40°	2 SATIN SILVER	09 900 lm	CRI >90	3 3000K	1 1-10V	E EMERGENCY	S SQUARE	3 Black	4 IP44	1 HONEYCOMB
	S Single Wallwash (on request)	5 31-40°	3 BLACK	11 1100 lm	2 STEPS	5 4000K	3 DSI	N Non-maintained		4 White		2 ELLIPTICAL FILM
	D Double Wallwash (on request)	6 51-60°	4 WHITE	13 1300 lm			5 DALI					3 FROSTED GLASS
							6 POE					
							7 LEAD / TRAIL					
							8 CASAMBI					
							9 ADDRESSABLE (EMERGENCY)					
<b>P3</b>	<b>F</b>	<b>3</b>	<b>4</b>	<b>07</b>	<b>J</b>	<b>2</b>	<b>5</b>	<b>0</b>	<b>S</b>	<b>4</b>	<b>2</b>	<b>0</b>



### Compact 89 Variations



Round Fixed



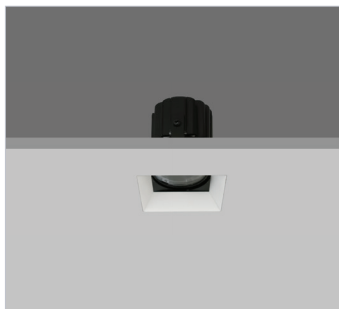
Round Directional



Trimless Round Fixed



Trimless Round Directional



Trimless Square Fixed



Trimless Square Directional

### Reflector and Trim Finishes



Black Reflector



White Reflector



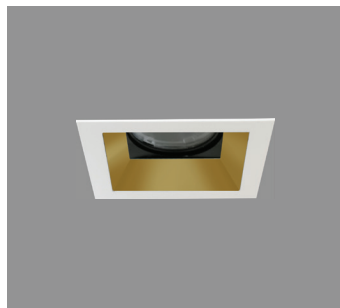
Satin Silver Reflector



Specular Silver Reflector



Bronze Reflector



Gold Reflector

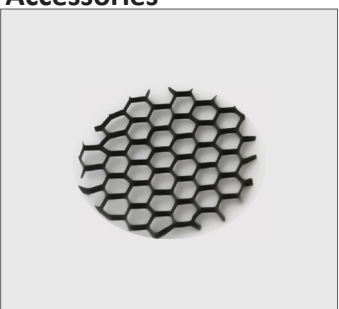


White Trim

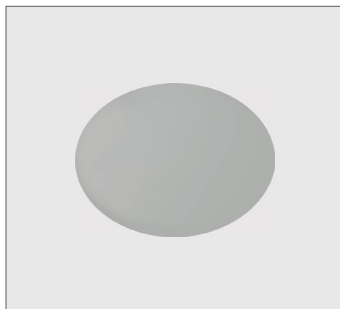


Black Trim

### Accessories



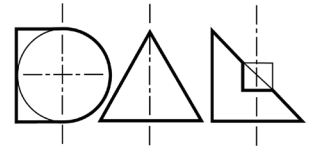
Honeycom Louvre



Elliptical Film



Sandblasted Glass



Light Source	Beam Angle	Lumen Source	Delivered Lumens	LOR	Luminous Intensity	Current	Forward Voltage	LED W	CRI	Macadam
LED Module	21°	700 lm	574 lm	≤84%	3611 cd	150mA	31.9V	5W	>90	2 step
		900 lm	743 lm		4686 cd	200mA	32.3V	6W		
		1100 lm	906 lm		5778 cd	250mA	32.7V	8W		
		1300 lm	1086 lm		6868 cd	300mA	33.0V	10W		
	33°	700 lm	593 lm	≤85%	1914 cd	150mA	31.9V	5W	>90	2 step
		900 lm	765 lm		2469 cd	200mA	32.3V	6W		
		1100 lm	936 lm		3017 cd	250mA	32.7V	8W		
		1300 lm	1111 lm		3583 cd	300mA	33.0V	10W		
	44°	700 lm	568 lm	≤84%	1111 cd	150mA	31.9V	5W	>90	2 step
		900 lm	732 lm		1436 cd	200mA	32.3V	6W		
		1100 lm	880 lm		1732 cd	250mA	32.7V	8W		
		1300 lm	1091 lm		2148 cd	300mA	33.0V	10W		
54°	700 lm	560 lm	≤80%	760 cd	150mA	31.9V	5W	>90	2 step	
	900 lm	719 lm		975 cd	200mA	32.3V	6W			
	1100 lm	869 lm		1178 cd	250mA	32.7V	8W			
	1300 lm	1037 lm		1406 cd	300mA	33.0V	10W			

