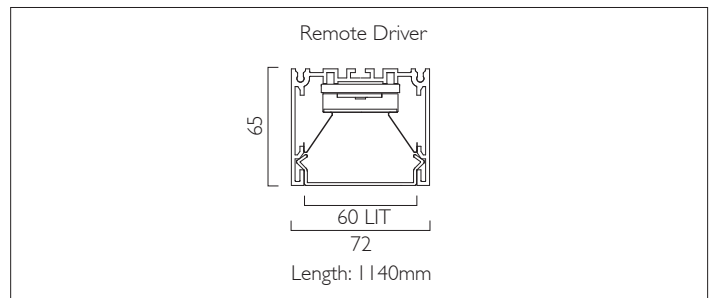
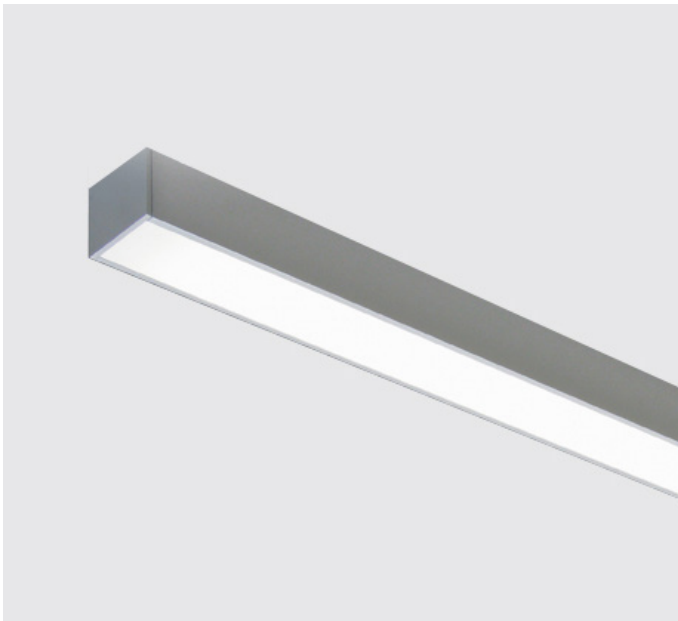




# LIGHTLINE LED 60

SURFACE / PENDANT

LIGHTLINE LED 60 can be surface mounted or suspended from the ceiling. It consists of an aluminium extruded profile constructed as individual modules in various chassis lengths, which come complete with integral or remote driver. Optical control is provided by a clip in opal diffuser.



Product Number	L8204
Lamp Type	LED, 4520 lumens, 3000K, Ra>80, 31.2W
Construction	Aluminium / Steel / Plastic
Diffuser	Opal
Ceiling Trim	White RAL 9010
IP	IP40
Control	Remote Driver

EN 60598-1  
WEE/AE0290TY

