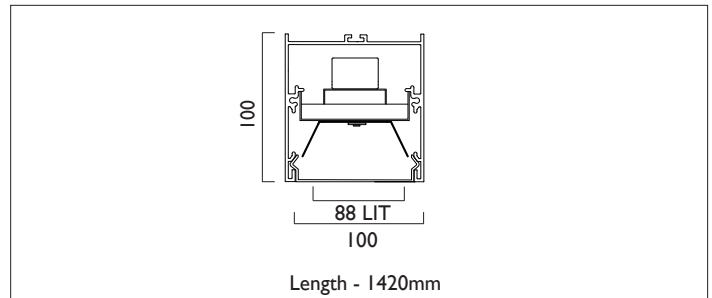
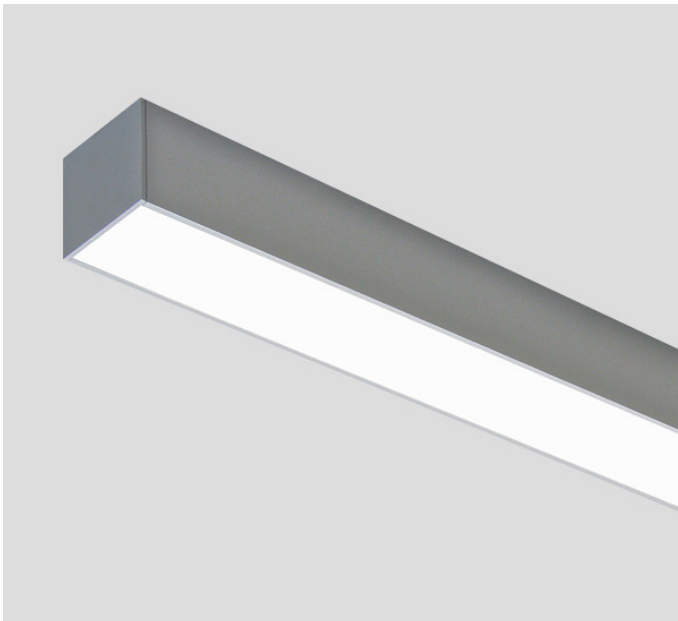




LIGHTLINE LED 88

SURFACE / PENDANT

LIGHTLINE LED 88 can be surface mounted or suspended from the ceiling. It consists of an aluminium extruded profile as individual modules in various chassis lengths, which come complete with integral driver: Constructed as individual modules in various chassis lengths, which come complete with integral driver: Optical control is provided by a clip in opal diffuser.



Product Number	L2405
Lamp Type	LED, 5650 lumens, 3000K, Ra>80, 39W
Construction	Aluminium / Steel / Plastic
Diffuser	Opal
Ceiling Trim	White RAL 9010
IP	IP40
Control	Driver

